

Rockaway Borough Library on East Main Street

COMMUNITY FACILITIES

Goals

1. Create a safe and healthy community.
2. Invest in civic spaces that are accessible to the public.
3. Support excellence in education for Rockaway Borough district school children.
4. Ensure high quality and responsive public works, safety, security and emergency response services.
5. Encourage greater use of community services through coordination and shared services.

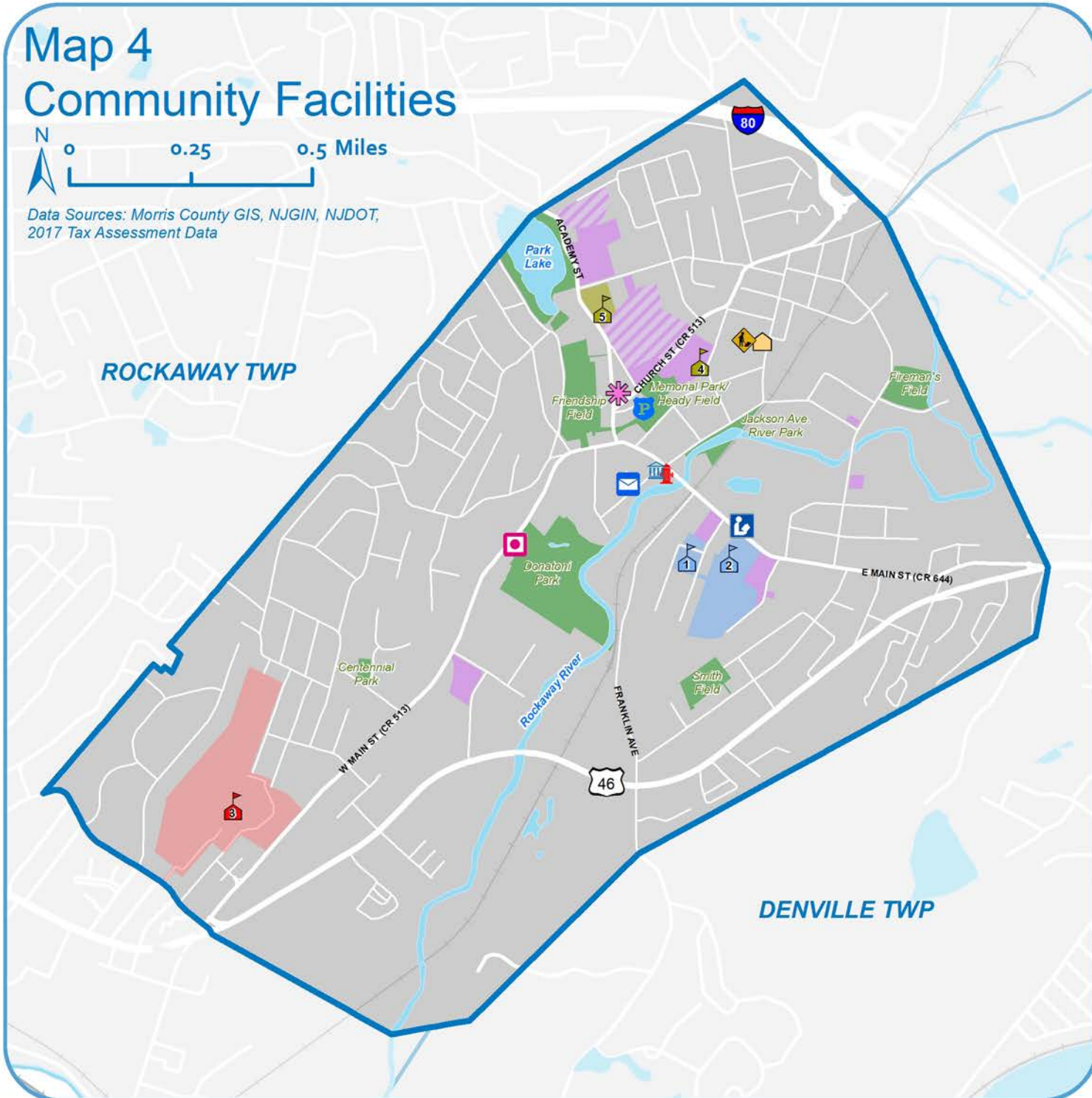
Introduction

The Community Facilities Element provides an inventory and evaluation of facilities in the Borough of Rockaway, including educational, municipal and human, infrastructure, emergency, and cultural facilities. These essential facilities (i.e. school buildings, Borough Hall, Borough Library, Police Department building, Fire House, Department of Public Works Yard, Community Center, etc.) house the services that serves Borough residents and can have a significant impact on residents' quality of life. This Element evaluates these facilities and identifies strategies to ensure they remain accessible to all residents.

Map 4 Community Facilities



Data Sources: Morris County GIS, NJGIN, NJDOT, 2017 Tax Assessment Data



Public

- Boro Hall
- Fire Station
- Police Station
- DPW Yard
- Community Center
- Library
- Boro Parks

Semi-Public

- Historical Society
- Post Office
- Bell & Barter Theatre
- Religious Institutions
- Religious Cemetery

Rockaway Schools

- Lincoln Elementary School
- Thomas Jefferson Middle School

Regional Schools

- Morris Hills Regional High School

Private Schools

- Divine Mercy Academy
- Park Lake School

Educational Facilities

Rockaway Borough School District

Although Rockaway Borough public school buildings are maintained and budgeted under the authority of the Rockaway Borough Board of Education, separately from the Borough Council, these schools and the impacts they have on their surrounding neighborhoods are important to identify in a Master Plan. The Rockaway Borough School District maintains two (2) schools: the Lincoln Elementary School and the Thomas Jefferson Middle School. Rockaway Borough is a walking district, although preschoolers are bussed to their classrooms. High School aged students are sent to the Morris Hills High School located in Rockaway Borough, part of the Morris Hills Regional School District which serves multiple municipalities.

Lincoln Elementary

The Lincoln Elementary School is the oldest school building, having opened its doors in 1912, over 100 years ago. The 20,464 square foot 3-story school building is located at 37 Keller Avenue. It currently serves pre-k through 3rd graders living in Rockaway Borough. The last substantial improvement to occur to the building were new boilers in the mid-1990s. In 2008, two temporary trailers were located on the playground, to accommodate room for two pre-school classrooms. The building is not handicapped accessible, although the building is not required to comply with ADA requirements, as it is 'grandfathered in' to those requirements. There is parking on-site for staff only. On-street parking is permitted on the surrounding dead-end streets: Keller Avenue, Central Avenue, and George Street. However, the issue of parking can arise between the school, the funeral home on the corner of Keller Avenue and East Main Street, and residents of Keller Avenue. Most parents pull-up to the front door on Keller Avenue for drop-off and pick-up.

*Lincoln
Elementary
School*

Thomas Jefferson Middle

The Thomas Jefferson Middle School currently serves 4th through 8th grades. It is located at 95 East Main Street. Built in 1958, the 1-story building is approximately 42,620 square-feet. The last upgrade to occur to the building was the addition of four (4) 4th grade classrooms in the mid-1990s. The building is handicapped accessible.

There is parking on-site for staff only. However, staff occasionally parks in the neighboring administrative building parking lot if the middle school lot fills up. Administrative staff are then forced out of their lot, and park in the neighboring Rockaway Assembly of God Church parking lot. For drop-off and pick-up, parents utilize the u-shaped driveway in front of the school. Due to the traffic congestion here, however, some parents opt to drop-off/pick-up children at the Rockaway Assembly of God Church parking lot, where students walk across the administration building lawn.

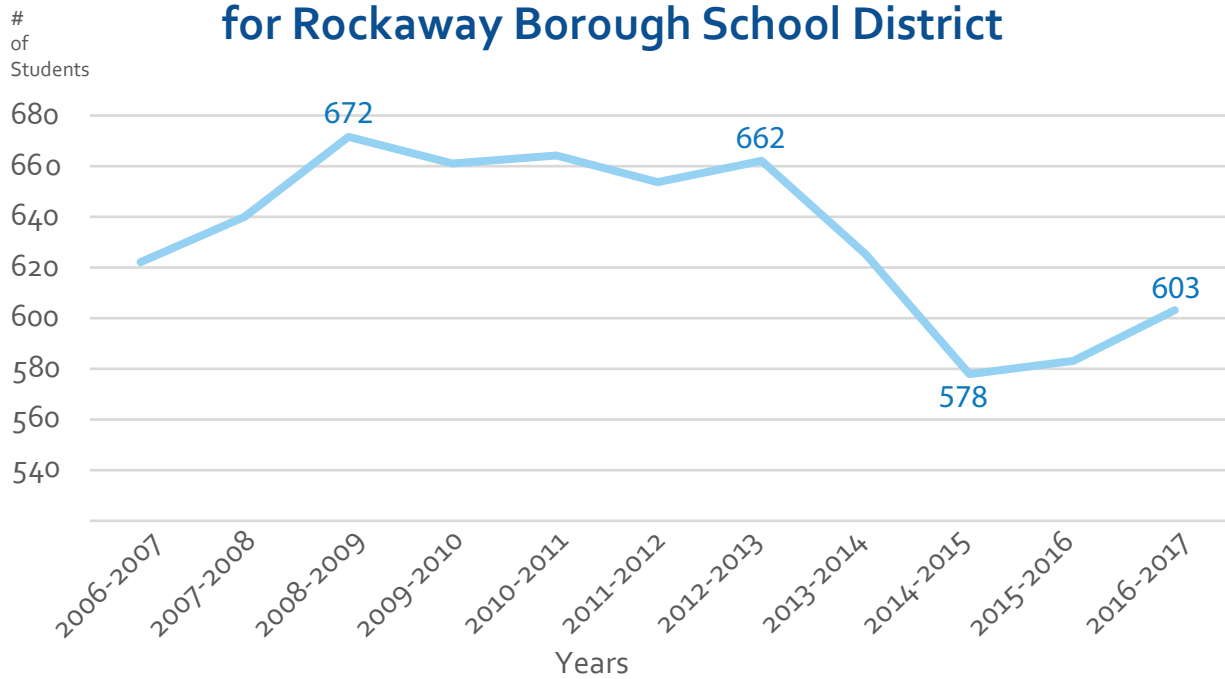


Thomas Jefferson Middle School

The school district also owns a 1,250 square foot field house for storage located behind the middle school's baseball fields. The fields are maintained by the school district, although the Department of Public Works sometimes performs small maintenance tasks. The Public Works Department coordinates with the School District for use of the fields, but not during school hours.



Enrollment Over Time for Rockaway Borough School District



Source: New Jersey Department of Education, DOE Data

Administration Buildings

The Rockaway Borough School District owns a 2,832 square-foot 2-story building located adjacent to the Thomas Jefferson Middle School at 103 East Main Street, where it operates its sole School Administration office. The building was built in 1900 and it is nicknamed “the white house,” because of its color. Despite its age, the building is adequate and there are plans to replace the front deck and windows. The building, however, is not handicapped accessible. On-site parking is available for staff.

In October 2018, the Rockaway School District proposed a bond referendum for improvements to its instructional buildings. The School Buildings’ Renovations and Additions Referendum was posed as three separate questions to voters. Voters rejected all three questions, contrary to the open-ended feedback received from the Master Plan Survey, in which respondents repeatedly identified the schools’ poor facility conditions. The proposed work from each of the referendum questions are provided here for reference.

Borough School District Facilities Needs Assessment

The Rockaway Borough School District enrollment sharply declined district-wide in 2012-2013, per the New Jersey Department of Education (NJDOE) website. Regardless of the sharp decrease in enrollment, the elementary school is slightly over capacity and the middle school is nearing capacity. Any increase in enrollment could create school capacity issues as defined by the State.

1. Question 1 work included the renovation and upgrade to the Lincoln Elementary School to provide: HVAC expansion and upgrades; security vestibule; roof replacement; fire safety improvements; restroom renovations; floor, wall, and ceiling replacement; lighting upgrades; electric system upgrades and various facility upgrades. It also included renovations and upgrades to the Thomas Jefferson middle School to provide: HVAC expansion and upgrades; security vestibule; restroom renovations; roof replacement; floor improvements; lighting upgrades; window upgrades; site improvement; electric system upgrades; library renovations; library upgrades and various facility upgrades. The State would

In the Fall of 2016, the Board of Education considered the vacant Sacred Heart School as a potential solution to overcrowding in the district. The Board of Education worked with an architectural consultant, but the Sacred Heart School was not pursued.

have contributed in the cost of this work.

2. Question 2 work would only occur if voters had voted for Question 1 work. Question 2 proposed to construct an addition to the Lincoln Elementary School to provide 3 classrooms, a new main entrance, and support spaces and upgrades to new mechanical, electrical, plumbing, safety, and other systems. The State would have contributed in the cost of this work.
3. Finally, Question 3 work would have only occurred had voters voted for Question 1 work. Question 3 work proposed the construction of an addition to the Thomas Jefferson Middle School to provide a competition gym and support spaces and upgrades to provide new mechanical, electrical, plumbing, safety and other systems. The cost of the work from this question would have been the sole responsibility of the Borough, with no State Aid.

Although Rockaway Borough voters voted against these improvements to the schools, as population is forecasted to increase in the Borough, the Board of Education should be aware that it will need to provide adequate school facility space for a potential increase in school-aged children.

Outside the concern for the school buildings themselves, the Borough should consider children's walk to and from Borough schools. The Borough should consider several walking path projects to help alleviate vehicular traffic during peak school hours (morning drop-off and afternoon pick-up) and to encourage walking among school-aged children. A crosswalk for students on the intersection of East Main Street and the western corner of Flagge Street would give students the ability to safely cross Main Street. A formalized walking route from the Lincoln Avenue/Rockaway Avenue neighborhoods to the Middle School, across the school's rear yard baseball fields would also aid in children's safety when walking to/from the Borough schools. The Borough may qualify for funding from the state-administered Safe Routes to School Program (SRTS), to implement these walking route projects. To qualify for the grant, Rockaway Borough will need to conduct a School Travel Study.

Other School Districts

Although the below schools are not directly under the purview of Rockaway Borough or the Rockaway Borough School District, these other school buildings are located in the community and are therefore a part of the fabric of Rockaway. The Borough should continue to work with the Morris Hills Regional District, the Parks Lake School, and other private schools to ensure a positive relationship and mitigate any potential impacts these schools may have on its Rockaway Borough neighbors.

Morris Hills Regional High School

The Morris Hills Regional High School is located at 520 West Main Street in Rockaway Borough. The high school serves 9th through 12th graders for the Morris Hills Regional District. Students are residents of Wharton, Rockaway Borough, and some southern sections of Rockaway Township. The facility opened in September 1953 on a 39-acre site for the former Gunther Estate and underwent an addition two (2) years later in 1955. In 2003, renovations and additions were approved by district voters, financing having occurred in 2004 through the Morris County Improvement Authority. The Morris Hills High School constructed an approximately 49,100 square-foot addition. Solar systems are also installed on the roof of this school building, as part of the Morris County Improvement Authority 3.2 MW renewable energy pilot program. Since 2000, the Academy for Mathematics, Science, and Engineering, a magnet school program of the Morris County Vocational School District has operated on site. This program is open to all students within Morris County. The school building houses both the regional school and the county mathematics program, of which its total capacity is approximately 1,200 students during a daily session.

Park Lake School

The Morris County Educational Services Commission (MCESCOM) operates Park Lake School located at 100 Academy Street in the Borough. The school focuses on the special education population, such as children with autism, pervasive developmental disorders, and multiple disabilities. The district serves ages 3-21 in Morris, Sussex, Warren, Passaic, and surrounding counties. The MCESCOM was able to construct five (5) additional classrooms (approximately 7,536 square-feet) at the Park Lake School, providing space for an additional 30 students thanks to financing through the Morris County Improvement Authority.

Private Schools

The Divine Mercy Academy is a private catholic school located at 87 Halsey Avenue, serving pre-k through 8th grades.

Community Facilities

Municipal Facilities

Borough Hall

Borough Hall, located at 1 East Main Street, was often described as “small” in the Master Plan survey results. Over three-quarters of survey respondents approve of community facilities, including Borough Hall. Built sometime in the 1940s, Borough Hall is located behind the Borough Fire House. Due to its small size, all public meetings are held at the Borough Community Center. The Mayor and Council do not have offices located at Borough Hall.

Departments located in Borough Hall include the Building/Construction Department, Clerk’s Office, Finance, Water, and Tax Departments with a total of 8 full-time and 2 part-time staff located in the building. The Borough has a Shared Service Agreement (SSA) with Randolph Township who provides health services staff and animal control services. The Borough has an SSA with Boonton Township for qualified purchasing agent services.

Department of Public Works Yard

The Department of Public Works is located at 21-25 Union Street behind the Community Center, providing water and sewer services, street maintenance, and administering the Recycle Center which is located on-site. The Recycle Center is open Monday through Friday, 9:00am to 2:00pm and on Saturdays from 9:00am to Noon. It is closed on Sundays and on holidays. Results from the Master Plan Survey indicate that respondents believe the Recycling Center to have inconvenient hours and the center should be open more often.



Rockaway Borough Fire Department, Borough Hall behind

Fire Department Building

The Borough of Rockaway has a Volunteer Fire Department and a paid Police Department. The Borough does not have its own Emergency Medical Services (EMS) and contracts with an outside agency for EMS and emergency transportation services.

The Volunteer Rockaway Borough Fire Department provides fire protection and other related fire services for the citizens and employees of the Borough of Rockaway. The Department was formed in 1867. The firehouse is located in the same building as Borough Hall at 1 East Main Street.

The Department responds to approximately 150 fire calls in the Borough each year and also responds to requests from neighboring fire departments including Denville and Dover for manpower or equipment. There were no structure fires in 2018, two car fires, 30-40 carbon monoxide calls, and the balance of calls were for false alarms or alarm malfunctions.

Rockaway’s Fire Department maintains a staff of 30-40 active firefighters, all of whom are on call. The Department has a Rapid Intervention Crew and a Swiftwater Rescue Crew. In 2018, the RIC responded to at least 24 calls within the Borough and surrounding towns, while there were no calls for Swiftwater Rescue.

An ISO Rating is a numeric evaluation for the quality of service fire departments provide to the community they serve with Class 1 being the best fire department a community could possibly have to Class 10 which means there's not much, if any department in the community. Rockaway Fire Department's ISO Rating is Class 4.

The Department maintains one 75-foot ladder truck, two pumpers, one pick-up truck used for Swiftwater Rescue support, and vehicles for the Fire Chief and Fire Marshal. A pending application for development to construct a 65-foot multiple family apartment building resulted in internal and external Fire Department conversations. It was determined through experience and the opinions of Fire Chiefs in Rockaway Borough and from neighboring municipalities that a 75-foot Ladder Truck could not successfully handle an actual fire occurrence in the upper extremities of a 65-foot multiple family dwelling anywhere in the Borough. This building height limitation was considered during the strategy development and Zoning Code recommendations resulting from this Master Plan. For reference, the current Borough Code permits a maximum building height of 40 feet.

Police Department Building

The Police Department is located at 33 Maple Avenue, between downtown and Heady Field. The building was constructed in the late 1970s or early 1980s. Currently, the Rockaway Borough Police Department maintains a staff of 15 full-time and 1 part-time police officers. The Department uses the County dispatch system, located off-site. The existing Police Department building is small and outdated. For instance, the locker room can only accommodate 4 or 5 police officers at a time and the meeting space in the building is at the upper limits of capacity. Although the Department does not require a new facility altogether, expansion of the existing facility would provide the additional space the department needs.

The Department maintains twelve (12) police vehicles, all in good working condition. There are five main vehicles on rotation for patrol, one vehicle used for the School Resource Officer at the High School, three detective bureau vehicles, one Lieutenant vehicle, one Police Chief vehicle, and two police vehicles dedicated to road jobs. The Police Department does not maintain a traffic unit and areas needing traffic assistance vary throughout the Borough. The Department does not operate video surveillance cameras but does have access to those purchased for parks and schools. The Department uses Nextdoor and social media such as Facebook to notify the public.

The department is also involved in community policing. Borough Police provide an on-site School Resource Officer (SRO) for the Morris Hills Regional High School. The officer's role is to be proactive in identifying concerns before they become issues. Rockaway Borough School has a signed contract with the Police Department for a retired police officer to serve as a full-time Class III Officer to serve both the elementary and middle schools. L.E.A.D., an anti-drug program, is another initiative between the department and educators to teach youth the important lessons about drugs. The Department also has a Bicycle Unit which began in 2009.

In February 2009, Rockaway had a Shared Services Agreement (SSA) with five (5) other Morris County municipalities²⁵ for the use of the Town of Dover Municipal Court building (located at 37 N. Sussex Street in Dover). Although the agreement was set to expire on December 31, 2018, the Borough opted to alternatively sign a Shared Services Agreement with Parsippany Troy-Hills starting on January 1, 2018 for the use of their Court building. In the agreement, Parsippany provides the Municipal Court facility, personnel, and resources and Rockaway provides for its own prisoner transport. Although the Borough pays an annual base fee of \$75,000 to Parsippany, this shared service saves Borough residents tax dollars, as it is a lesser cost than the fee associated with the Dover agreement. The agreement stays in effect for a period of five years, until 2023.

Community Gathering Places



Rockaway Borough Library

Rockaway Borough Library

The Rockaway Borough Library, known as the Foster Memorial Library or the Colonel Joseph Jackson House, is located at 82 East Main Street on a national historic site, the building having been built in the early 1800s. The former residence is three stories, of which two are used for the Library and one for the historic rooms and display cases. The attic and basement are both used for storage and utilities.

The lower level, accessible from the rear parking lot, is used for children's and young adult library materials, resources, public tables and chairs, public computers, a circulation desk, a staff kitchen, a public bathroom, and a public book sale room. There is also a milk room currently undergoing renovation on this level and will be open to the public for special events. The Main Level hosts adult library materials, resources, public tables and chairs, public computers, a circulation desk,

one office, a display case, and a public bathroom. The upper level is dedicated to historic rooms and includes a historic tea room, a historic parlor/museum room, and a historic library/flag room. The lower level is handicapped accessible but there are no internal accommodations for access to upper floors. As a historic building, the library is considered ADA compliant.

The library has one full-time Director and has seven (7) part-time library assistants. There are no permanent volunteers, although the Friends of the Library is an active volunteer organization dedicated to promoting and supporting the library. According to staff members, the library is utilized well by all demographic groups, with very young children, parents, school-age children/youth, and seniors the most frequent patrons.

As a historic building, the facility has received several grants from Morris County Historic Preservation in recent years, which have substantially improved the library's exterior. Rehabilitation activities were structural in nature and included sill plate reinforcement, grading and drainage, masonry repair, gutters and leaders work, window repair, siding replacement, exterior painting, and milk room restoration.

The library is a warming center but it does not currently have a back-up generator. Improvements needed include interior paint touch-ups, a lighting upgrade, and re-paving and landscape improvements.



Rockaway Borough Community Center

Community Center

Rockaway's Community Center is located at 21-25 Union Street, in front of the Public Works Yard and RecycleCenter. All public meetings are located here, including public meetings for the Borough Council, Planning Board, Environmental Commission, Parks and Recreation Advisory Committee, and the Board of Health.

When asked why respondents were not satisfied with the convenience and usefulness of the Borough's community facilities, the Community Center was mentioned most often. Many respondents asked what the Community Center was and what goes on there and other times it was regarded as too small. When asked why survey respondents were

not satisfied with the Community Center services, respondents wished there were programming for children, teens, and seniors. Some thought a recreation center or larger community center could be a viable option.



Rockaway Borough Post Office

Post Office

The United States Postal Service (USPS) has a facility located at 1 Bank Street, Suite #9. The Post Office operates 6 days a week (8am-4:30pm M-F, 9am-12pm on Saturday) and there is street parking available for visitors. The Post Office building also houses second floor office units and is subject of discussion for potential redevelopment, as it is located within Borough Center.

Potential Farmer's Market

The United States Department of Agriculture (USDA) publishes a Food Access Research Atlas (last updated in May 2017) which describes food access and identifies "food deserts." Poverty plays a primary role in identifying food deserts. Rockaway Borough is not located in a food desert as the poverty level there is low (2.8). Despite low poverty levels, food access is still of concern.

In 2010, there was not a relatively high number of households without vehicles that were more than one-half mile from a supermarket (3.3%) in Rockaway Borough. However, according to 2015 data in the Atlas, there is low vehicle access and low access to grocery stores in Rockaway Borough with a relatively high number of households without vehicles that were more than one-half mile from a supermarket (4.2%). The Borough should be cognizant of food access when attracting businesses to the Borough. When asked what type

of businesses Master Plan Survey respondents would like to see in the Borough, grocery stores were repeated on several occasions.

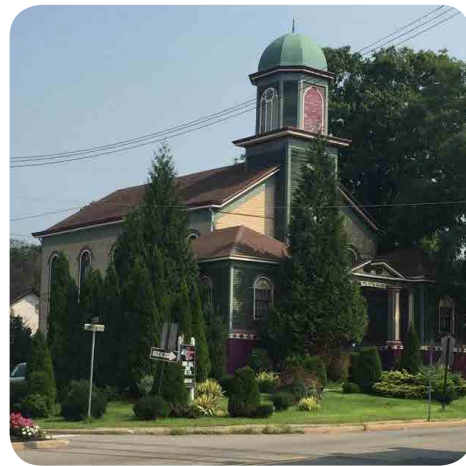
The Borough may consider establishing a Farmer's Market in Borough Center to provide healthy food options to its residents while attracting visitors from outlying municipalities.

Semi-Public & Private Community Facilities

Community facilities not only include public, Borough-backed facilities, but can also include semi-public and private facilities. The Borough is home to several places of worship and other non-profit or tax-exempt entities, indicated on **Map 4**. There are no private or for-profit community facilities located in the Borough other than the Bell & Barter Theatre.



Historical Society, next to Donatoni Park



Bell & Barter Theatre

Future Community Facilities

Open Space

The 1995 Master Plan included an Open Space, Parks and Recreation Element, while this Master Plan does not contain such an element. However, open space is an integral part of the fabric of the Borough and should be discussed, albeit briefly. Included on **Map 5: Future Community Facilities**

and in **Table 13** below is a mapping and listing of all open space properties that the Borough has identified for potential Recreation and Open Space Inventory (ROSI) listing. Listing on the ROSI protects properties from development so that it can remain as open space. Properties listed on the ROSI can also be called “Green Acres” properties.

Table 13: Existing ROSI Properties in Rockaway Borough

<i>Location</i>	<i>Block and Lot</i>	<i>ROSI Status</i>
Memorial Park	Block 45, Lot 13	ROSI Listed; received 1985 Green Acres grant
Jackson Avenue River Park	Block 17, Lots 28, 29, 30	ROSI Listed, Unfunded
Lincoln Avenue Ballfield	Block 38, Lot 75	ROSI Listed, Unfunded
Park Lakes	Block 58, Lot 1	ROSI Listed, Unfunded

Source: New Jersey Department of Environmental Protection, ROSI, & Borough Records

Table 14: Borough-Owned Properties Recommended for ROSI Listing

<i>Location</i>	<i>Block and Lot</i>	<i>Borough Status*</i>
Beach Street Park	Block 21, Lots 6 & 25	2010 List
75A West New Street	Block 40, Lot 13.03	2018 List
West New Street	Block 40, Lot 14.01	2018 List
Donatoni Community Park	Block 40, Lots 86 & 88	2010 List
West Main Street	Block 40, Lot 98	2018 List
Wall, W. Main & Lakeside	Block 46, Lot 36	2018 List
Friendship Field	Block 46, Lot 37	2010 List
Centennial Park	Block 73, Lot 45.01	2010 List
Stephen Place	Block 75, Lots 6 & 7	2018 List
Mountain Road	Block 75, Lots 14, 15 & 16	2018 List

*2010 List means the list of properties held for conservation/recreation purposes in the Borough in 2010 and no local governing body nor the State received a copy of this listing;

2018 List means that the properties were identified at a 7/11/2018 Meeting of the Borough Environmental Commission for potential ROSI listing



Historic Preservation

Rockaway Borough has never adopted a Historic Preservation Element as part of its Master Plan. As indicated in the Master Plan Survey, respondents perceive Rockaway Borough to be “historic”. Therefore, it is important to identify historic properties of value for future planning in Rockaway

Borough. Included on **Map 5: Future Community Facilities** and in **Table 17** below is a mapping and listing of historic sites that should be preserved. The Borough should look to, at a minimum, locally designate and update zoning ordinances to preserve these sites.

Table 15: Existing Historic Sites & Districts

	Location	National Register (NR) Reference # & Listed Date	SHPO Inventory ID # & State Register (SR) Listed Date	SHPO Opinion Date
Historic Sites				
Colonel Joseph Jackson House (Rockaway Public Library)	82 E. Main Street	#75001155 3/4/75	#2238 11/19/75	
Rockaway Presbyterian Church	35 Church Street		#4987 Eligible	
Historic Districts				
Morris Canal	Existing and former bed of Morris Canal	#74002228 10/1/74	#2784 11/26/73	4/27/04
Old Main Delaware, Lackawanna and Western Railroad Historic District			#4895 Eligible	6/12/13

Source: National Park Service’s National Register of Historic Places, and New Jersey State Historic Preservation Office

Table 17: Historic Properties Recommended for Local Historic Designation

	Location	Historic Preservation Element of Morris County	Plaque	New Jersey Historic Sites Inventory (NJHSI)*	Historic American Buildings Survey (HABS)**	SHPO Inventory ID # & State Register (SR) Listed Date
Historic Sites						
Former Municipal Building	Intersection of Church & Dock Sts.					Identified Individual
Estille House	560 West Main Street	X				
Dr. John Jackson House, the Pill Dispensary	4 West Main Street	X		NJHSI-2660.3		
Stephen Jackson House and Outbuilding	82 E. Main Street (north side) at Franklin Ave,	X	X	NJHSI-2660.7	HABS-NJ-507	
The Methodist Church of Rockaway (Bell & Barter)	Church Street at Mt. Hope Road (Theatre & Arts Center)	X				

* NJHSI should not be confused with the New Jersey Register of Historic Places. The NJHSI is a list of sites, which some documentation has been gathered.

**HABS means that the site has measured drawings, photographs, and descriptions on file in the Library of Congress



Map 5: Future Community Facilities



Data Sources: Morris County GIS, NJGIN, NJDOT, 2017 Tax Assessment Data

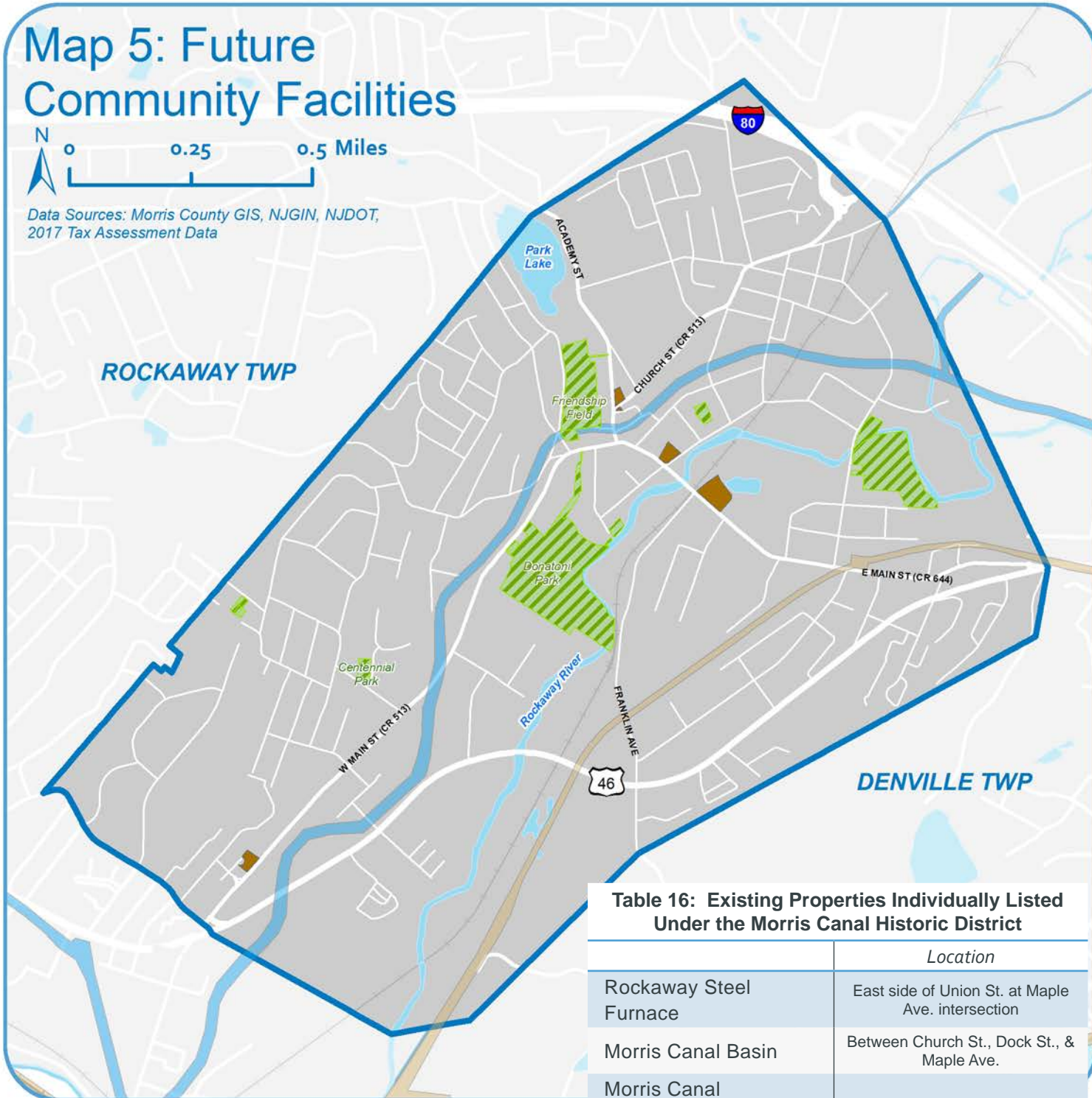


Table 16: Existing Properties Individually Listed Under the Morris Canal Historic District

	Location
Rockaway Steel Furnace	East side of Union St. at Maple Ave. intersection
Morris Canal Basin	Between Church St., Dock St., & Maple Ave.
Morris Canal Plane 6 East	
Morris Canal Basin	
Beaver Brook Aqueduct	
Stickle's Lumber Yard	
Canal Store	
Beach's General Store	18, 20, 22 Wall Street
Rockaway Hotel	
Morris Canal Basin	

Open Space

Properties Recommended for ROSI Listing

Historic Districts & Properties

Historic Properties Recommended for Preservation

Existing State/National Historic Districts

Morris Canal

Old Main Delaware, Lackawanna and Western Railroad Historic District

Source: National Park Service's National Register of Historic Places, and New Jersey State Historic Preservation Office

Community Facility Funding Sources

While community facilities are typically funded through a Borough Capital Improvement Program (CIP), other funding sources (i.e. grants) are available.

State Resources

Safe Routes to School Program (SRTS)

The SRTS program is funded by the Federal Highway Administration's (FHWA) Federal Aid Program and is administered through the New Jersey State Department of Transportation (NJDOT) in partnership with the North Jersey Transportation Planning Authority (NJTPA). County, municipal governments, and schools are eligible to apply

to the program. Types of projects funded include *infrastructure projects* such as for the planning, designing and construction or installation of sidewalks, signals, traffic-calming, and bicycle facilities, and *non-infrastructure projects* such as public awareness campaigns, walk and bike to school events and training, traffic education and enforcement, and student lessons on bicycle and pedestrian safety, health, and the environment.

TransOptions is a Transportation Management Association (TMA) that covers all of Morris County. Located in TransOptions' coverage area, Rockaway Borough is also eligible to receive free technical assistance from the organization, relating to safe routes to school programs. This can include Travel Plans, Walkability/Bike Audits, or safety training programs.



Community Facility Element Strategy Plan

Directions

“Check off” a completed Strategy and mark the year of completion as a way to measure progress.

Priority 1: complete in 1-2 years; **Priority 2:** complete in 3-5 years; **Priority 3:** complete in 10+ years.

Community Facility Element Strategy Plan

	<i>Strategy</i>	<i>Implementing Party</i>	<i>Priority Level</i>	<i>Completed</i>	<i>Year Completed</i>
General					
1	Continue to promote shared service opportunities with other municipalities as a way to provide increased services and save taxpayer money.	All Departments, Borough Council	Priority 1		
2	Continue to provide accessible community facilities which meet the standards of the Americans with Disabilities Act (ADA).	Borough Council	Priority 1		
3	At the time of the next Master Plan or Master Plan Re-examination, include a Historic Preservation Element.	Planning Board, Borough Council	Priority 1		
4	At the time of the next Master Plan or Master Plan Re-examination, include an Open Space, Parks, and Recreation Element.	Planning Board, Borough Council	Priority 1		
5	Enhance key visual landmarks in the community, including gateways and other public gathering areas with landscaping, signage, and other key improvements.	Planning Board, Borough Council, Parks and Recreation Department	Priority 1		
Educational Facilities					
6	Partner with TransOptions to conduct a Travel Plan or Audit to assess potential safety concerns for students who walk to school.	TransOptions, Rockaway Board of Education, Borough Council	Priority 1		
7	Conduct a School Travel Study, a prerequisite to become eligible for “Safe Routes to School” funding.	Rockaway Board of Education, Borough Council	Priority 2		
8	Pursue “Safe Routes to School” funding to encourage students to walk to school.	Rockaway Board of Education, Borough Council	Priority 3		
9	Consider walking route enhancements to the Middle School from nearby neighborhoods (i.e. crosswalk on East Main Street/Flagge Street, formal walking path from Lincoln/Rockaway Avenues).	Rockaway Board of Education, Borough Council	Priority 1		
10	Work with the Board of Education to develop an “open playgrounds” agreement where playgrounds on school properties are available for community use after school hours.	Rockaway Board of Education, Parks and Recreation Department	Priority 2		

Community Facility Element Strategy Plan

	<i>Strategy</i>	<i>Implementing Party</i>	<i>Priority Level</i>	<i>Completed</i>	<i>Year Completed</i>
11	Maintain positive relationships with the Morris Hills Regional School District, the Park Lake School, and other private schools in the Borough and minimize their impacts to surrounding neighborhoods.	Borough Council, Morris Hills Regional School District, Private Schools	Priority 2		
Community Facilities					
12	Continue to support the Borough's library.	Library staff, Borough Council	Priority 1		
13	Equip the Borough library with a back-up generator as it is considered a warming center.	Library staff, Borough Council	Priority 1		
14	Identify alternative locations for a new Borough Hall.	Borough Council	Priority 2		
15	Permit residents and local organizations to use the Community Center for children, teen, or senior programming.	Borough Council	Priority 2		
16	Study the need for a Recreation Center.	Borough Council, Parks and Recreation Department	Priority 1		
17	Begin a Farmer's Market in the Borough Center to provide healthy food options for Borough residents.	Borough Council, Parks and Recreation Department	Priority 1		
18	Update the Borough's website for convenient and transparent access to Borough resources and information.	Borough Council	Priority 2		
Emergency Services					
19	Continue to pursue grants to improve existing services and develop new safety initiatives.	Police, Fire, Borough Council	Priority 1		
20	Ensure that the Fire and Police Departments are appropriately staffed to meet the current and future needs of the Borough which is forecasted to increase in population over the next decade.	Rockaway Police, Fire, Borough Council	Priority 1		
21	Study the need for expansion to or relocation of the Police Station.	Rockaway Police, Borough Council	Priority 2		